



MyTrees

MITI YANGU

OPERATIONS UPDATE

2022/2023

CONTENTS

List of Abbreviations	1	AFR100	African Forest Landscape Restoration Initiative
Message from the Chairperson of The Board of Trustees	2	APU	Anti-poaching Unit
Map of Operational Footprint	3	CSR	Corporate Social Responsibility
Theory of Change	4	DCA	Danish Church Aid
My Trees' Contribution to Achieving the Global Sustainable Development Goals	5	EN	Endangered
Operational Highlights for 2022/2023	7	FSC	Forest Stewardship Council
Operations:		IUCN	International Union for Conservation of Nature
Restoration	9	KAZATFCA	Kavango-Zambezi Transfrontier Conservation Area
Tree Planting	9	OTP	One Tree Planted
Survival Counts	9	RDC	Rural District Council
Nursery Restocking	12	SAA	Sustainable Afforestation Association
Seed Collection	12	SMART	Spatial Monitoring and Reporting Tool
Conservation	13	SDGs	Sustainable Development Goals
Zambezi Wilderness Conservation	13	tCO2e	tonnes of CO2 emissions
Biodiversity Surveys	13	TIST	The International Small Group & Tree Planting Program
Forest Stewardship Council Certification	16	VU	Vulnerable
The My Trees Anti-Poaching Unit (APU)	16	ZEF	Zambezi Elephant Fund
APU Operational Statistics	16	ZPWMA	Zimbabwe Parks and Wildlife Management Authority
Human-Wildlife Conflict	17		
Community Support	19		
Infrastructure Management	19		
Tourism Development	19		
Community Conservancy Prospects	19		
Special Projects	21		
Stove Distribution	21		
Long-Term Ambitions	23		
Carbon Financing	23		
Biodiversity Credits and Conservation Expansion	24		
Growth Ambitions for The Next Three Years	25		
Financials	26		
Partners and Funders	27		



MESSAGE FROM THE CHAIRPERSON OF THE BOARD OF TRUSTEES

Andrew Halsted

I am delighted to present the 2023 Chairperson's report for My Trees Trust. As we reflect on this past year, I would like to extend my sincere gratitude to our dedicated team and to our stakeholders who have played such a key role in driving our mission forward.

The Trust has continued to make significant strides in our commitment to combat deforestation in Zimbabwe. Our core mission remains resolute: "To inspire everyone to plant trees and protect woodlands."

Our journey this year has been marked by remarkable achievements, which are a testament to the unwavering dedication and passion of our people. We planted over 350,000 indigenous trees across various regions in Zimbabwe, revitalized ecosystems and safeguarded vital biodiversity. Our focused tree planting programs, our stewardship of vulnerable wilderness areas, and our support to surrounding rural communities have tangibly reduced deforestation and contributed to carbon sequestration.

Our outreach and education programs have also seen tremendous growth. We have collaborated with local schools, rural communities, and organizations to raise awareness about the importance of preserving natural resources. Through workshops, seminars, and online campaigns, we've engaged individuals of all ages in the urgent cause of reforestation and the means of rehabilitating woodlands.

Additionally, we have leveraged front-line technology and data-driven approaches to enhance the efficiency of our tree planting initiatives. By monitoring the growth and health of the trees planted, we ensure that our efforts are sustainable in the long term.

None of these achievements would have been possible without the continuous support of our generous donors, dedicated people, and the trust placed in us by

the rural communities we work with. Your unwavering commitment to our cause and vision fuels our determination to make a lasting impact on the environment and the lives of those affected by deforestation.

Looking ahead at the coming season, we are poised to plant out a further 500,000 trees from our current nursery stocks, and to expand our educational outreach. Together, we can prosper through an abundance of trees.

Once again, thank you for your invaluable support with which we are hoping to secure a brighter and more sustainable future for generations to come.





ZAMBIA

MOZAMBIQUE

 MyTrees

MITI YANGU

-  Focal Communities
-  Tree Planting Areas
-  Conservation Areas

KARIBA
Charara South
Gache Gache
Magunje
Deve
• KAROI

Chundu

• CHINHOYI

Christon Bank

Nyabira

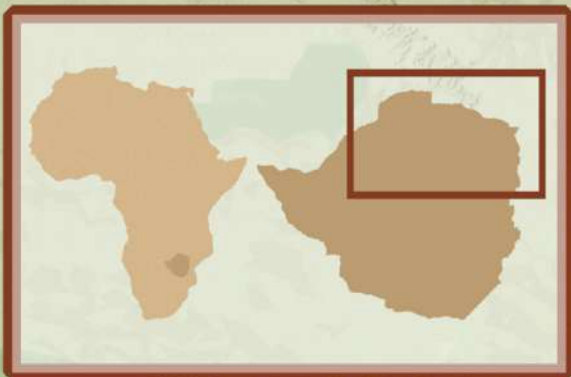
HARARE

Honde Valley

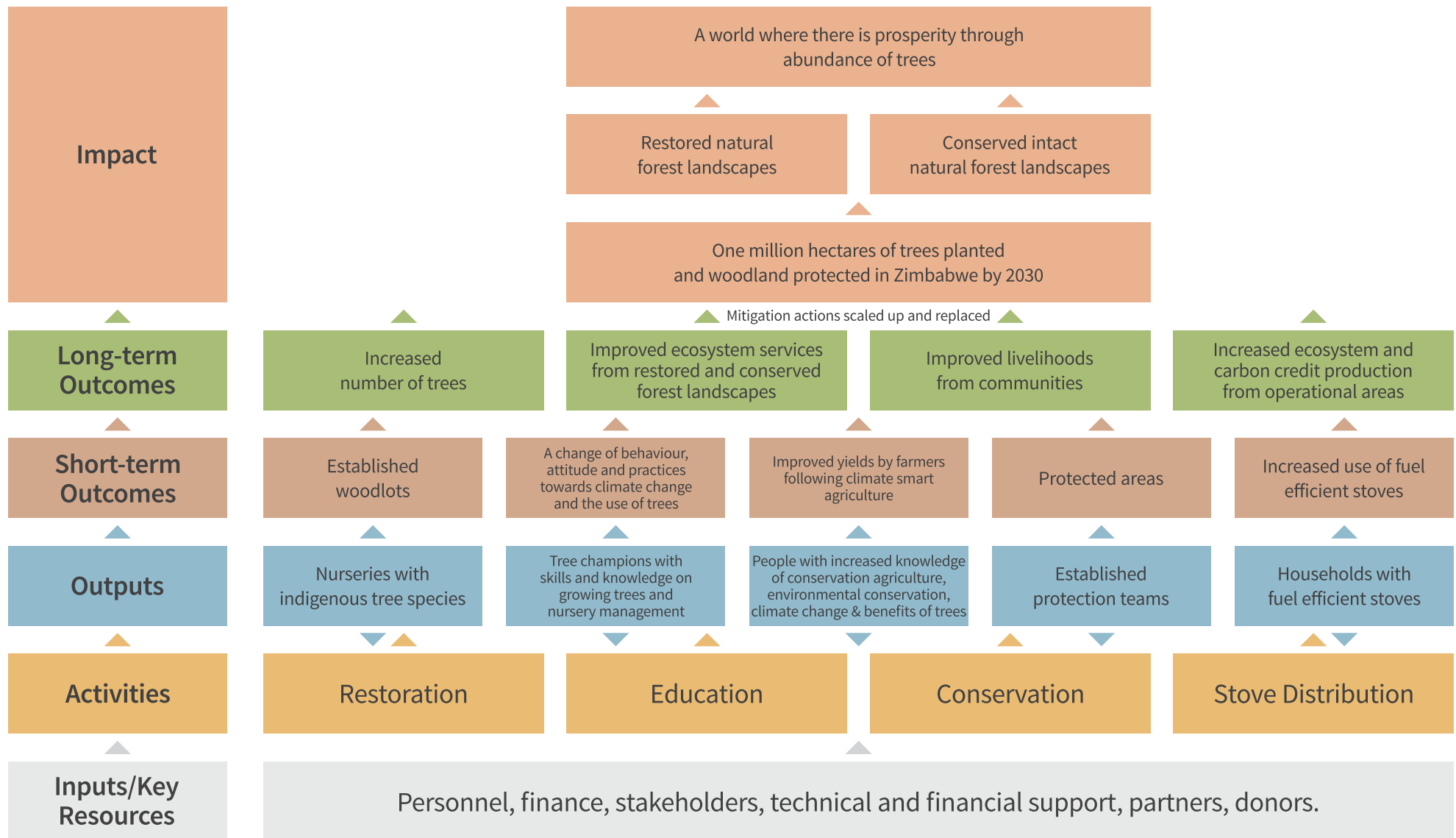
• RUSAPE

ZIMBABWE

• MUTARE



THEORY OF CHANGE



OUR CONTRIBUTION TO ACHIEVING THE GLOBAL SUSTAINABLE DEVELOPMENT GOALS



- A total of USD\$300,000 has been paid to growers through our tree planting program since 2019. This has contributed significantly to household revenue and food security in the rural communities we operate in.
- Over 1,100 jobs created at rural community level through our restoration work.
- 118,000 fuel-efficient stoves distributed to poor households since 2020.



- Our conservation farming has trained 360 rural household and aims to increase food security and increase their economic revenue. This is vital as one in three people worldwide struggle with moderate to severe food insecurity.



- Fuel-efficient stoves are reducing the amount of smoke inhalation in rural kitchens and households. This reduces the risk against lung diseases among poor rural households that rely on wood fuel for cooking in Zimbabwe.
- Incremental household revenue earned by tree growers is contributing to disposable income thereby expanding their nutritional options.
- The revenue is also helping in affording health-related costs and increasing general financial well-being.



- In 2022-2023, 39% of our employees and contracted growers are women. This is an improvement from the 2021-2022 season, where 15% of our employees and contracted growers were women.
- Gender equality remains a focus and we aim to increase this proportion to at least 50% by 2025.
- Women represented 58% of those trained in conservation agriculture and in the Community-Based Environmental Protection & Social Cohesion Curriculum Program.



- My Trees employs or contracts over 1,000 people in Zimbabwe, in a country where according to the UN “1 in 4 young people are not in employment, with young women more than twice as likely as young men to be in this situation”.





- 89% of our rangers or wildlife scouts, 90% of counters, and 47.2% of growers are youth. The youth are important members of the rural communities that My Trees engage to build healthy and empowered rural communities for the future.
- The Community-Based Environmental Protection & Social Cohesion Curriculum Program improves participation for vulnerable groups within rural communities.
- In the 2022-2023 season, 39% of employees and growers are women and 58% of growers were trained in conservation agriculture. 58% were also capacitated in the Community-Based Environmental Protection & Social Cohesion Curriculum Program as workshop facilitators.



- Our mission is to aid rural farmers and landowners in reducing the consumption of natural capital for the overall benefit of their communities and the environment.
- A total of 118,000 fuel-efficient stoves were distributed and are currently in use by poor households since 2020. The stoves are reducing the demand for wood for rural household cooking significantly in operational areas.
- There is a significant reduction of the impact of poaching in our conservation concessions due to wildlife protection and anti-poaching initiatives by My Trees.
- Tree planting, conservation agriculture as well as environmental protection workshops, advocating for sustainable waste management for rural smallholder farmers are improving land use practices and sustainable crop production methods.



- We planted over 500,000 indigenous trees in Zimbabwe to combat woodland loss and environmental degradation.
- My Trees is protecting wildlife and biodiversity in over 120,000 hectares of the Zambezi Valley.
- There is ongoing workshops and educational support within rural communities to help mitigate against and adapt towards the impacts of climate change.
- 118,000 fuel-efficient stoves distributed to poor households since 2020.



- Our work to protect and restore wildlife and woodlands, sustainably manage forests, halt further land degradation and biodiversity loss are all crucial activities to improve life on land across Zimbabwe.



OPERATIONAL HIGHLIGHTS FOR 2022/2023



RESTORATION

- 30 nurseries established and operational;
- Combined seedling capacity of 550,000 trees across all nurseries;
- Over 500,000 trees planted since My Trees was established;
- 86% average survival rate of planted trees;
- 855 contracted growers;
- 100 further employment opportunities created.



CONSERVATION

- 1,200 snares removed in conservation areas;
- 30 arrests for poaching and illegal activity;
- Cumulative patrol effort of over 11,000km patrolled;
- Over 17,000 km of fence patrols undertaken;
- Elephant-proof fence operational every day of the year;
- 140km of roads rehabilitated.



SPECIAL PROJECTS

- Christon Bank Botanical Reserve opened up to visitors;
- Dam lining installed at the Botanical Gardens in Harare;
- 20,000 trees planted at schools and other public spaces;
- The Community-Based Environmental Protection & Social Cohesion Curriculum Program developed and ready to be continued to roll out in planting and conservation areas.



STOVE DISTRIBUTION

- 118,000 stoves distributed across the country;
- 157,000 tonnes of CO² emissions (tCO₂e) reduced.



We are achieving key milestones across the My Trees programs, which is a good indication that we are on track to achieve the long-term outcomes that we have set. Our Theory of Change (see page 4) lays out the flow of activity required to take us towards our desired impact, which includes:

- ▶ Increased number of trees;
- ▶ Improved ecosystem services from restored and conserved forest landscapes;
- ▶ Improved livelihoods within rural communities;
- ▶ Increased carbon, biodiversity, and social credits from operational areas.

If we extrapolate the current results towards My Trees' long-term growth ambitions, it is feasible to achieve our long-term goal of planting and protecting one million hectares of trees in Zimbabwe by 2030.

The 2022/2023 season was another year of growth for My Trees as we continued to plant and protect trees across the country. Of course, our achievements have not been without their challenges, and we have tried to capture both the highs and lows in the following operational descriptions. My Trees has four operational areas: restoration, conservation, special projects, and stove distribution.



RESTORATION

Tree Planting

In the December 2022 - January 2023 season, My Trees planted 365,000 trees across all our restoration sites in Hurungwe (Chundu and Deve), Honde Valley, and Harare. This works out to over 1,000 trees planted a day for the 2022 - 2023 season, an achievement we are extremely proud of. In addition, during this period we planted our 500,000th tree. Since our conception in 2019, we have planted over 542,000 indigenous site appropriate trees. It was great to achieve the half a million mark, but we are looking forward to growing this number to one million trees planted each year.

The tree planting was successful with some challenges. In Honde, a challenge was that this was the first large-scale planting program that My Trees had undertaken there. A few of the seedlings were not very big and poor in quality, which resulted in some mortality during out-planting. In addition, at some of our nurseries the shoot to root ratio was still incorrect. There was too much top growth and not enough filling out of the roots. In Hurungwe, the rains were also particularly late, delaying planting operations. Usually, trees are planted in the first week of December, but this year we were only able to start distributing and planting seedlings after Christmas. This was a lesson for the planting teams to develop patience and flexibility and plant with the arrival of the rain rather than on prescribed dates.

My Trees planted 365,000 trees across all our restoration sites... This works out to over 1,000 trees planted a day for the 2022 - 2023 season.

Survival Counts

In July 2023, we sampled 20 per cent of the total number of growers in Chundu and Deve operations to verify tree count data and determine the tree survival rates for growers from 2020, 2021, and 2022. A large proportion of farmers selected were 2022 growers, who made up 77% of the total sample considering their large total number. The remaining 23% was proportionally shared between 2021 (20%) and 2020 (3%), being the first year. The weighted average tree survival rate was 86%. These survival rates are a positive indication of the care our growers are putting into looking after the trees planted. It shows community level buy-in that is critical to the success of community afforestation projects.





ZAMBIA

MyTrees
MITI YANGU

- Focal Communities
- Tree Planting Areas
- Nursery
- Nursery Cluster
- Current Seed Bank
- Future Seed Bank

MOZAMBIQUE

Chundu

• KARIBA

Magunje

• KAROI

Deve

• CHINHOYI

Nyabira

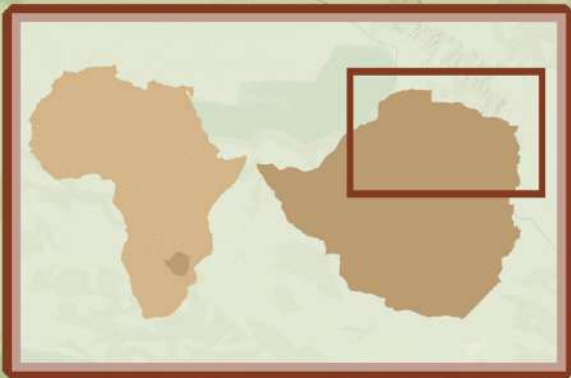
HARARE

ZIMBABWE

Honde Valley

• RUSAPE

• MUTARE



0 20 40 60 80 100 km





Seed Collection

At the start of 2023 we managed to construct our first specialized seedbank in Deve. As we grow and position ourselves to plant one million trees a year, we need to ensure we have a steady and reliable supply of seeds to achieve this aim. This purpose-built facility will have the capacity to store up to 1.5 million seeds in a regulated environment that should ensure these seeds will have long term viability. This facility will undergo several tests and reviews over the next few months so we can refine its design and functionality. Once we are happy with this facility, we will build replica seedbanks in Chundu, Honde Valley, and Harare. These seedbanks will provide us with the capacity to store five million seeds for all our planting ambitions. Other progress has been the hiring of dedicated seed workers, especially women. In 2022 there were no seed workers, and we were buying seeds per kilogram. This didn't incentivise quality and prioritized the collecting of only the large seed species. The hiring of a dedicated seed team in each operational area will improve the quality and quantity of seed we collect.



Nursery Restocking

We have managed to restock all 30 of our nurseries and have over 500,000 seedlings to plant between December 2023 and January 2024. This means that later this year (2023) we will plant our 1 millionth tree - our next big milestone.



CONSERVATION

Zambezi Wilderness Conservation

The protection of wilderness areas and biodiversity at scale remains one of the driving ambitions of My Trees. As such, My Trees' conservation work continues within our conservation concessions, Gache Gache and Charara South, which are situated within the Kariba region of the Zambezi Valley. Progress has been rapid over the last 12 months as we have expanded our capacity to deliver meaningful rehabilitation to the 120,000 hectares the concessions total. These areas represent an important part of the wider Kavango-Zambezi Transfrontier Conservation Area (KAZA TFCA). We are continuously reminded that we play an important role in a bigger story of habitat connectivity and socio-economic development here.

Wildlife within these concessions will require time to fully recover from poaching and illegal hunting; however, we have already seen encouraging signs of improvement. Our in-field teams are recording increased species diversity and abundance, which shows that our efforts are starting to reap rewards.



Biodiversity Surveys

In December 2022, we undertook the My Trees Biodiversity Study. This was a pioneering study trip with the purpose of cataloguing the biodiversity present in our conservation areas, both qualitatively and quantitatively. The exercise was designed to test data collection methodologies as the first step towards wider and more robust biodiversity data collection in our conservation areas. For this reason, the accuracy of data in following years will no doubt be improved, and the 2022 data will be used mainly as a general overview of our biodiversity footprint. It is nevertheless a useful starting point from which to expand our long-term scientific monitoring for the future.

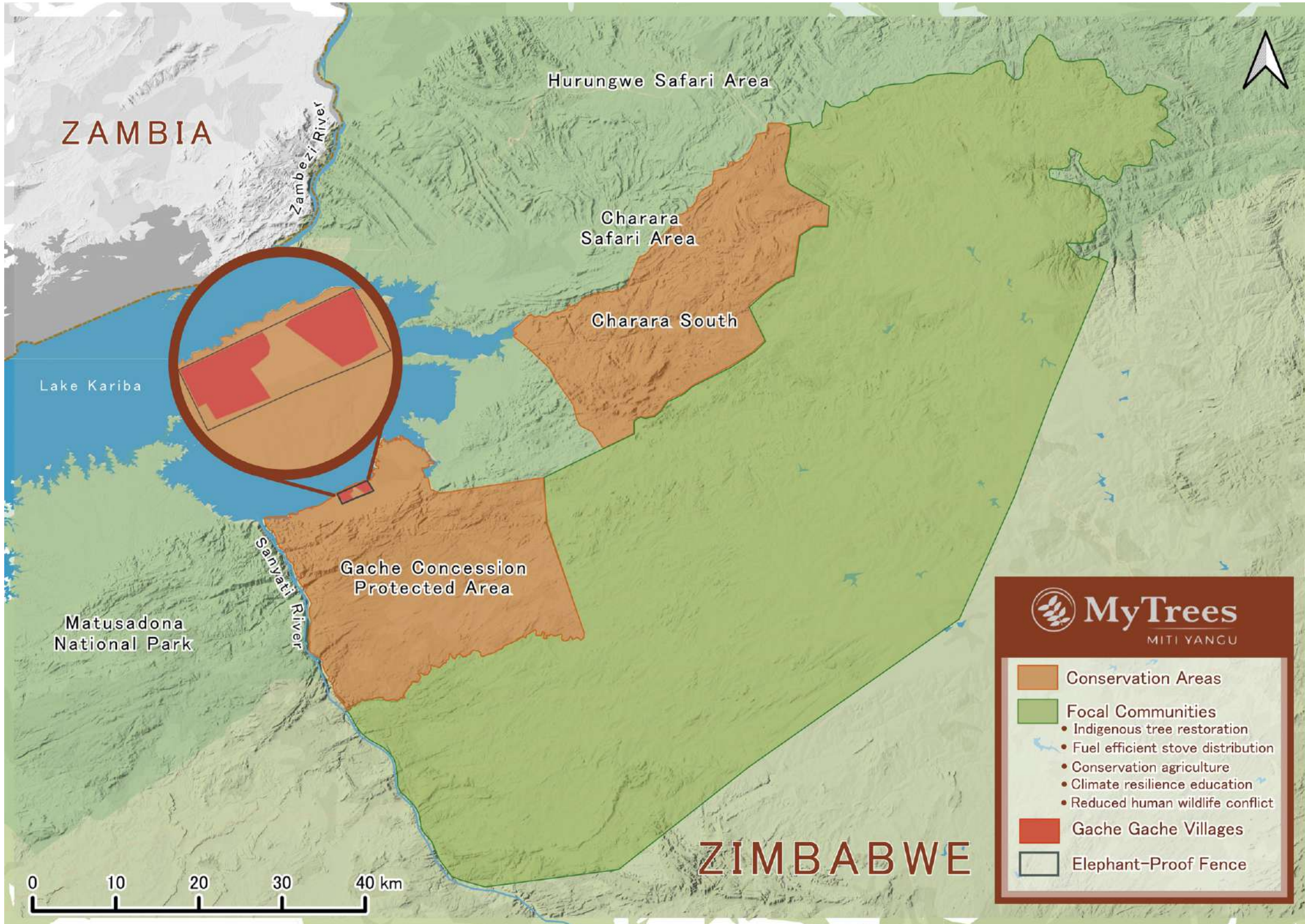
During this study we observed:

- 112 species of birds;
- 26 species of amphibians;
- 7 species of butterflies;
- 17 species of spiders.

In addition, several International Union for Conservation of Nature (IUCN) Red List species have been recorded in the concessions:

- *Loxodonta africana* (African Bush Elephant): Endangered (EN);
- *Lycaon pictus* (African Wild Dog): EN;
- *Panthera leo* (Lion): Vulnerable (VU).

In October 2023 we will be doing a game count across our two concessions to get an enhanced understanding of the mammalian populations in the area. This will provide baseline data to assess the improvement and impact our anti-poaching and management work will bring to the area.



ZAMBIA

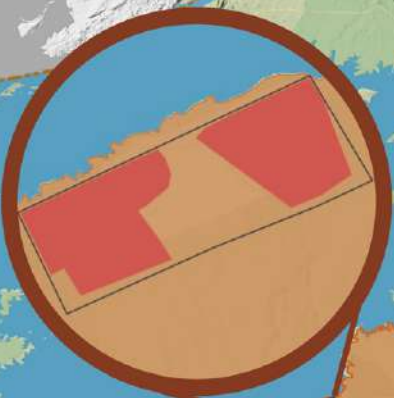
Hurungwe Safari Area

Charara Safari Area

Charara South

Zambezi River

Lake Kariba



Sanvati River

Gache Concession Protected Area

Matusadona National Park

ZIMBABWE

 **MyTrees**
MITI YANGU

-  Conservation Areas
-  Focal Communities
 -  Indigenous tree restoration
 -  Fuel efficient stove distribution
 -  Conservation agriculture
 -  Climate resilience education
 -  Reduced human wildlife conflict
-  Gache Gache Villages
-  Elephant-Proof Fence

0 10 20 30 40 km





Forest Stewardship Council Certification

In January 2023 My Trees was awarded a certification from the Forest Stewardship Council (FSC). There is now 100,000 hectares of intact wilderness under a FSC Forest Management Plan and My Trees is the second organization to get this accreditation since Zimbabwe's recent re-entry into FSC in 2020.

The My Trees Anti-Poaching Unit (APU)

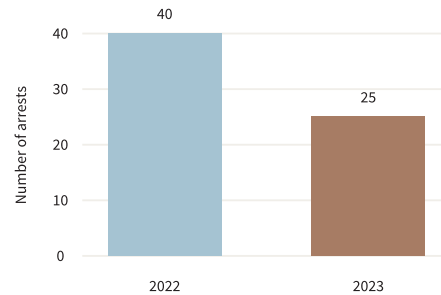
Operations in 2022/2023 have scaled up significantly throughout both the Gache Gache and Charara concessions. Two to three anti-poaching teams are operational full time in our areas, and incidences of illegal activity has reduced significantly. Consequently, wildlife, specifically within the Gache Gache area, has already shown a marked improvement. The presence of predators is particularly encouraging, with up to ten lions (at least two small prides) now resident in that area. African Wild Dogs have also been seen regularly. The increase in these predator numbers indicates an improvement of prey species, which is corroborated by recorded sightings showing that many antelope species, as well as buffalo, are increasing or stable. The APU is now in the process of expanding operations into remote parts of the concessions, with the assistance of new roads being rehabilitated to allow access. Encouraging signs of remnant wildlife (including sable, zebra, and buffalo) have been recorded within this rugged hill country.

APU Operational Statistics

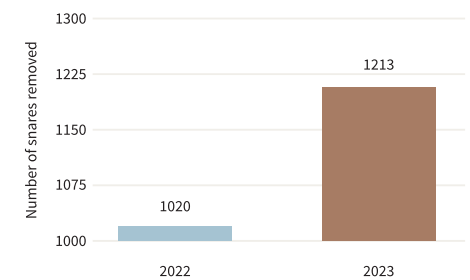
Whilst our patrol data collection has been manual to date, our APU is now introducing the Spatial Monitoring and Reporting Tool (SMART) system to collate activity and incidence data. The Gache Gache conservation manager will be

responsible for the roll out of and training in the system. The introduction of SMART will allow for improved monitoring and will enable biodiversity metrics to be collated from in field observations.

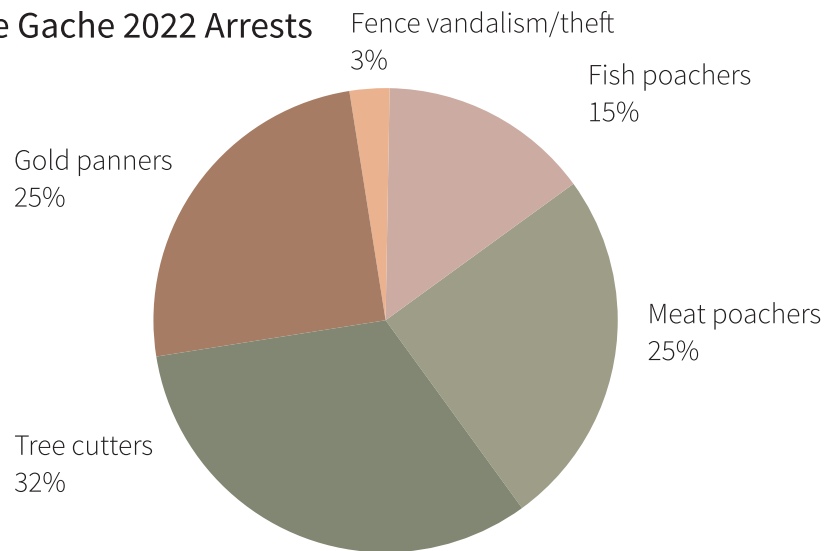
Gache Gache Arrests in 2022/23



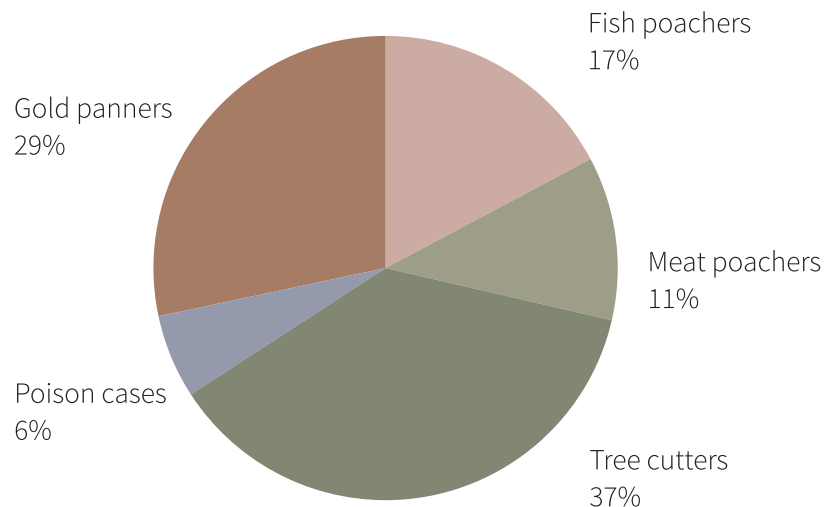
Snares Removed Jan 2022-July 2023



Gache Gache 2022 Arrests



Gache Gache 2023 Arrests



Human-Wildlife Conflict

The solar powered elephant-proof fence, which was installed around the Gache Gache community in 2022, has been successful in preventing further incidences of crops lost and destroyed due to elephants. The fence team, composing of fence guards who protect the fence from wildlife breaches or vandalism, form the first line of defense for the rural community. The fence guards are trained to repair and maintain the fence in the event of a breakdown.

- A consistent power supply ensured to the fence every day for the last 12 months;
- Our fence guards average 24 km of fence patrol by bicycle each day per fence guard. A cumulative patrol effort of 17,520 km was covered in the last 12 months;
- Multiple repairs of fence breakages caused by lions and buffalo and community members have been undertaken, without a single injury to humans or a loss of wildlife recorded;
- The fence has repelled elephant, buffalo, and hippo throughout the year (apart from occasions when buffalo have been chased through the fence by lions) and has enabled community members to harvest their crops without loss in 2023.

With an increase in lion populations, conflict with local livestock owners has also increased. The elephant fence has not successfully deterred lions, which jump the fence to attack donkeys and goats. There is a plan to develop a range of lion deterrent methods to reduce the loss of livestock, which includes bolstering the fence with additional wire and experimenting with light and audio deterrents.

Two to three anti-poaching teams are operational full time in our areas, and incidences of illegal activity has reduced significantly.



Community Support

My Trees within the Gache Gache community are assisting the rural community with a variety of their needs that include:

- Assisting the fishermen's association to develop a successful grant application for US\$50,000;
- Repairs and maintenance of the Gache Gache Primary School's plumbing system and their furniture and flagpole;
- Clearance of the Gache Gache Secondary School's soccer pitch;
- Financial support of multiple school trips to various sporting events;
- Financial support for culturally important ceremonies;
- Medical first aid support and transport for the local clinic to assist injured community members, everything from crocodile attacks to critically ill patients.

Infrastructure Management

Our mandate through our lease agreements with both Zimbabwe Parks and Wildlife Management Authority (ZPWMA) and Nyaminyami Rural District Council (RDC) requires a continual program of road maintenance and fire management.

- Over 140 km of roads rehabilitated in the Charara South concession;
- Over ten river crossing points made vehicle accessible;
- Early season burning completed in Charara with the preservation of large blocks of dry season grazing to support wildlife.

Tourism Development

The development of non-consumptive tourism remains an important ambition within our protected wildlife areas. We are in the process of opening camping sites

within Charara, which will initially allow self-drive visitors access to a previously inaccessible areas of the Zambezi wilderness.

Community Conservancy Prospects

One ambition for the Gache Gache concession, with its unique feature being the Gache Gache village community at its centre, is to make it a showcase for human-wildlife co-existence in Zimbabwe – the Gache Gache Community Wildlife Conservancy. We are very encouraged by the cooperation of local community, and this may pave the way to develop a community wildlife conservancy in the area. The abundance of wildlife, particularly on the open plains of the Kariba lakeshore, could be a major attraction to visitors, in combination with an experience of local village life within this remote and stunningly attractive part of Zimbabwe.





SPECIAL PROJECTS

Aside from our main restoration and conservation operations, there are several other smaller projects we are incubating in our Special Projects department. In 2022/2023, the following projects in the Special Projects department focused on:

- ▶ The development of an education program that has and will continue to deliver workshops on environmental protection, tree planting conservation agriculture, the effects of climate change, and climate adaptation to our grower communities;
- ▶ Identifying biodiversity islands and engaging the rural communities around the islands to collectively protect them. The first of this kind was the Botanical Reserve in Christon Bank, which My Trees has been supporting since 2022;
- ▶ Securing funding to service the water reticulation system at the Botanical Gardens in Harare;
- ▶ Engaging urban and peri-urban schools to plant and protect trees. Over 15,000 trees were planted with schools in 2022/2023.

Part of the Special Projects mandate is to nurture partnerships with both public and private entities in Zimbabwe to foster corporate social responsibility programs focused on environmental protection. We are looking forward to finding local solutions to local problems, and many corporates in Zimbabwe can help support this work. Corporations have the capacity to drive positive change by integrating sustainable practices into their company profiles, providing economic stability, and contributing to the overall welfare of the environment.

Acknowledging the efforts of those already contributing encourages others to step up and embrace their social and environmental responsibilities. Through collaboration and awareness campaigns, the fervent hope is to foster a culture of heightened involvement by stakeholders ensuring a sustainable and prosperous future for the environment. We are thankful to the support of SPAR, CABS, Nedbank, The Rift Valley Group, Cicada Carbon, and ZimDam who have supported us in 2023 through corporate social responsibility or environmental, social, and corporate governance programs.

Stove Distribution

The distribution of fuel-efficient stoves continued in 2022/2023 funded by Cicada Carbon. Since conception, My Trees has distributed 118,000 stoves and another 42,000 are waiting to be allocated. The stove project went through a monitoring and auditing process to verify its carbon offset potential. For the period 23/09/2021 – 22/09/2022 the actual emission reductions achieved for the monitoring period were 157,345 tCO₂e. In terms of reduced wood consumption, the project is expected to save roughly 160,000 hectares of woodland over its five-year term.

Most importantly, the sale of the fuel-efficient stove credits will allow more investment into My Trees afforestation and conservation plans.

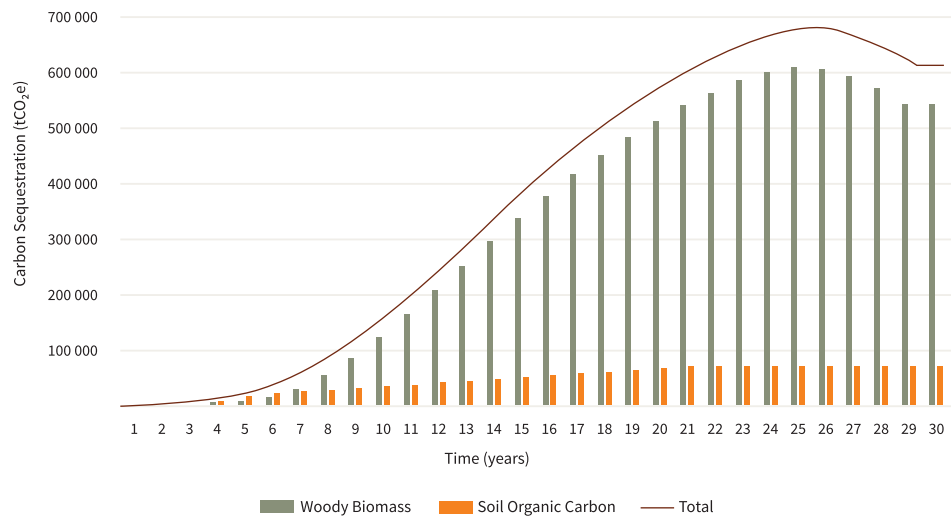




LONG-TERM AMBITIONS

Carbon Financing

The implementation of our tree planting initiative will form a legitimate climate change mitigation activity. Planting one to two million trees per year across degraded lands, followed by long-term stewardship, will lead to a gradual increase in tree biomass and soil organic- carbon stocks over time.



My Trees recently commissioned a carbon feasibility assessment on its tree planting operations, based on the ambition to plant one million trees a year for the next 10-20 years. On this assumption, modelling shows that My Trees could restore approximately 27,000 hectares of land. With our current survival rates as a baseline, the indication was that over the next 30 years My Trees's operations could sequester 9.5 million tons of carbon dioxide in woody biomass, and another 1.5 million tons of carbon dioxide in organic soil carbon.

A major problem with this ambition is that it is expensive and has no obvious commercial impetus behind it. To address the scale of deforestation in Zimbabwe, we cannot continue to rely on philanthropic or corporate social responsibility funds. The Trust is therefore proposing registering a carbon project with the Voluntary Carbon Standard that will allow us to monetize tree growth and put the project on a sustainable long-term footing. The carbon credits issued by My Trees will be a new “cash crop” for the participants, who can gain all the direct benefits of growing trees (shade, better soil health, higher water retention, increased biodiversity, adaptation to the impacts of climate change), as well as an annual cash stipend based on the carbon sequestration of the surviving trees. The addition of carbon credit payments will displace the requirement for ongoing funding under a Corporate Social Responsibility (CSR)/philanthropic model. The impact of an initial investment in this project will be multiplied many times over, as ongoing revenues from carbon sales fund further planting.



Biodiversity Credits and Conservation Expansion

As the developed world increasingly recognises the vital importance of intact ecosystems for a liveable planet, several international organisations are advancing solutions and methodologies to quantify the measured and verified preservation of wilderness, which will allow for the subsequent development of a market in biodiversity credits. My Trees is dedicating significant resources to this prospect, and we will continue to explore how our own concessions, alongside others in the protected area landscape, can produce a credit that illustrates verifiable and trusted carbon, biodiversity, and social impact.



GROWTH AMBITIONS FOR THE NEXT THREE YEARS



RESTORATION

- Expand tree planting operations to one million trees planted each year.
- 2,000 rural families added to our tree planting rural communities each year.
- 2,000 hectares of woodland restored within rural communities each year.
- Register an ARR carbon project.



CONSERVATION

- Add an additional 200,000 hectares to our conservation portfolio.
- Develop a viable biodiversity and ecosystem service credit model.
- Develop a Community Conservancy Programme in the Gache Gache areas.



SPECIAL PROJECTS

- Add another two biodiversity hotspots to our small forest stewardship program.
- Train 2,000 growers a year in the Community-Based Environmental Protection & Social Cohesion Curriculum Program.
- Plant 20,000 trees a year with schools and in partnership with local corporates.



STOVE DISTRIBUTION

- Distribute another 50,000 stoves.
- Reduce firewood demand by over 500,000 tons.

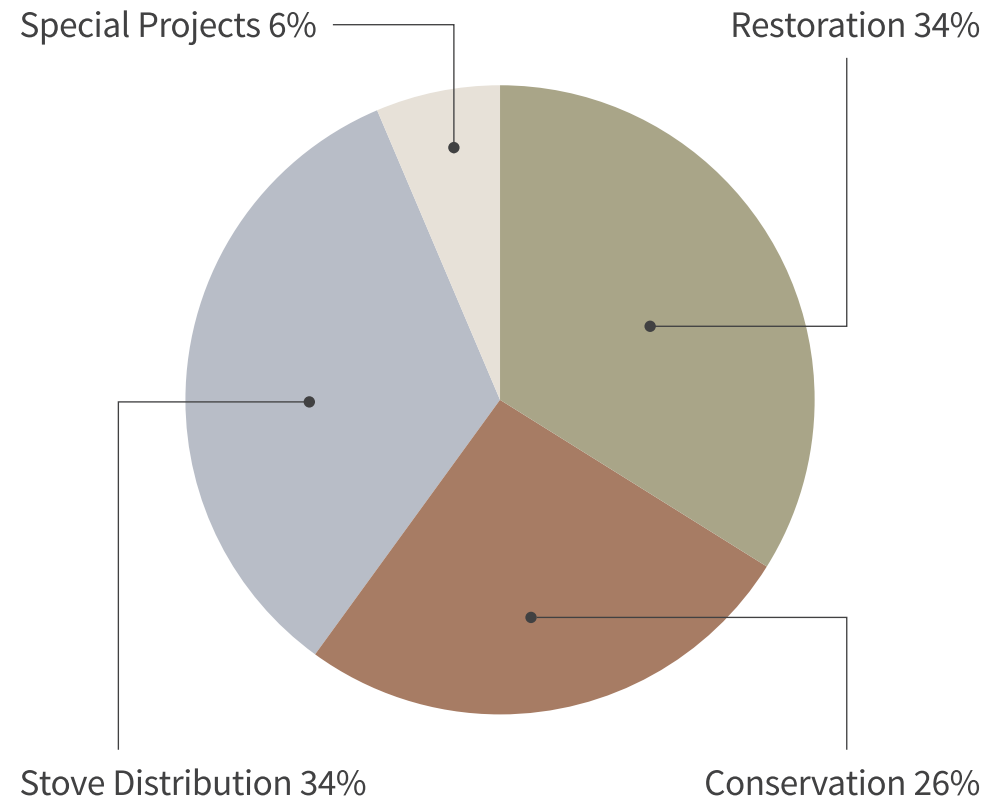


FINANCIALS

Donor	Amount US\$
Cicada Carbon	\$783,348
Cold Play	\$611,865
The Rift Valley Group	\$365,549
SAA	\$145,298
The Embassy of the Kingdom of the Netherlands to Zimbabwe	\$115,403
OTP	\$60,800
AFR	\$57,600
The Reischel Foundation	\$50,000
Zambezi Elephant Fund	\$41,550
Other Donations	\$35,836
Total Funding 2023	\$2,267,249

1. Cicada Carbon donation includes USD\$324k of carbon income.
2. Donations in the table above do not include value of donated stoves from Cicada Carbon of USD\$1,552,603.

For 2022/2023, My Trees spent over US\$2.1 million in the following operational areas:



For the financial year 2022/23, My Trees received over USD\$ 2.3 million in funding and support.



PARTNERS AND FUNDERS

My Trees has forged numerous valuable partnerships on its journey so far.

Donor Community

In 2022 My Trees started to attract the attention of the international donor community and now has ongoing programs with One Tree Planted (OTP), as well as being recognised as one of Africa's top 100 tree planting programs by African Forest Landscape Restoration Initiative (AFR100). We have also been named as one of Coldplay's Conservation Partners. Additionally, we have been supported by the Embassy of the Kingdom of the Netherlands to Zimbabwe, Danish Church Aid (DCA), the Beit Trust, Great Plains Foundation, the Rieschel Foundation, and the Zambezi Elephant Fund (ZEF).

Technical Partners

My Trees is one of 12 winners of the Carbon Uplink Challenge, a World Economic Forum Initiative to link funding to innovative and credible projects trying to combat climate change. We have partnered with the United States (US) Forestry Service, who are assisting My Trees with improving our seedling quality and production process. My Trees is also getting technical support from The International Small Group & Tree Planting Program (TIST) who have successfully implemented similar projects to My Trees in India, Kenya, and Uganda, and are helping My Trees with aspects of the carbon model.

Institutions

In 2023 we secured our Private Voluntary Organisation Status. We have partnership agreements with national bodies such as the Forestry Commission, ZPWMA, and the National Herbarium and Botanic Gardens. Before starting a project or operation in an area, My Trees ensures that we always have the support of the local rural district council and traditional leadership and have memoranda of understanding in place with these institutions.

Private Sector

My Trees also has the support of several important partners from the private sector such as The Rift Valley Group, Cicada Carbon, the Sustainable Afforestation Association (SAA), Fuchs, CABS, Nedbank, SPAR, and Spear Capital.







MyTrees

MITI YANGU

Dr. Rory Pilosof
General Manager
[rpilosof@mytreestrust.org](mailto:rpilosof@mytreetrust.org)

James Egremont Lee
Strategic Director
jegremontlee@mytreestrust.org

General Enquiries:
info@mytreestrust.org

[mytreestrust](https://www.mytreestrust.org)
www.mytreestrust.org



Photography by:
Simon de Swardt
Juliet Kind
Philip Griffith